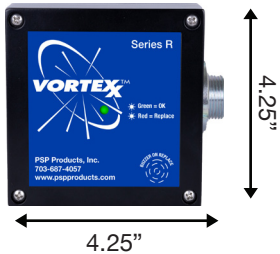
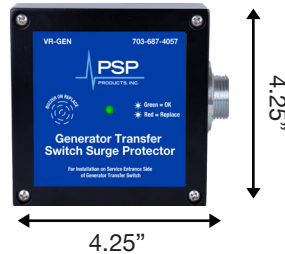


VR-120 Surge Protectors



VR-GEN Surge Protectors



IMPORTANT: FLAT BLADE TERMINALS MUST BE INSTALLED UNDER MAIN CONDUCTOR AND NOT BETWEEN THE CONDUCTOR AND LUG SCREW TERMINAL TO CONFORM TO PROPER INSTALLATION STANDARDS. USE ONLY THE TERMINALS SUPPLIED, IF TERMINALS ARE DAMAGED OR MISSING CONTACT PSP PRODUCTS FOR REPLACEMENTS.

Installation Instructions


1. Confirm VR device is rated for your system by comparing voltage measurements to the line voltage on the product label.
2. Turn off all power supplying this equipment before working on or inside the equipment.
3. See installation diagrams below and match to your specific installation type.
4. If installing on a breaker, use a 20A-60A breaker and verify lug on breaker provides solid connection to SPD wiring.
5. In some jurisdictions, provided flat tabs can be used in the bottom of the lug.
6. As a Type 1, no breaker is required.
7. Install in accordance with all pertinent articles of the National Electric Code.
8. Confirm that the electrical terminals used to attach this device are identified for these conductors.
9. Keep conductor length as short as possible with no sharp bends.
10. Do not loop or coil wires.
11. Ensure a high quality ground is in place.
12. Turn on all power supplying this equipment.
13. Verify diagnostic indicator is illuminated and no audible alarm is present.
14. Install cover and/or close door on equipment fixture.



Technical Assistance: 703-687-4057

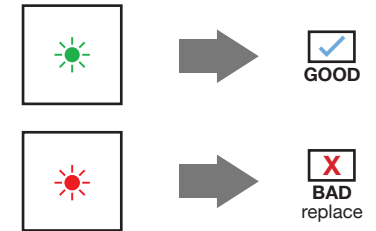
Important: Risk of electrical shock.

This device should only be installed by qualified personnel

 -40/+185°F max. -40/+85°C max. IP66	P/N
	VR-120 VR-GEN
AC Network	
Nominal Voltage	120VAC
Max. Operating Voltage (MCOV)	150VAC
Max. Discharge Current (Imax)	120kA
Nominal Discharge Current (In)	20kA

Installation Notes

- Designed to allow installation inside of electrical panel using optional L-bracket.
- Designed to allow installation inside of a finished wall using optional flush mount cover.



Diagnostic Operation

- LED GREEN = Normal operation
- LED RED = Fault, check phase voltage and connections. If OK, replace unit.
- Audible Alarm ON = Fault, check phase voltage and connections. If OK, replace unit.

Diagram A Type 1 Installed on Occupied Breaker

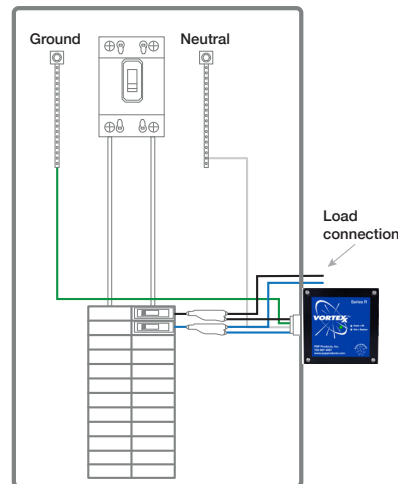


Diagram B Internal Panel Mount

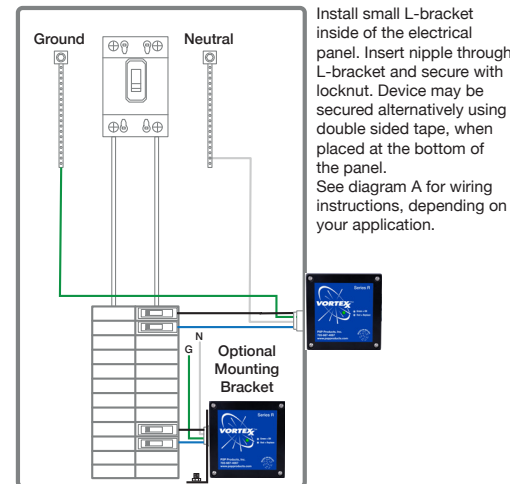
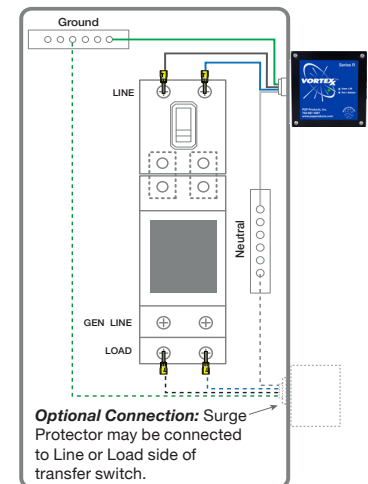


Diagram C Type 1 Install: Transfer Switch with Piggyback Connectors or Ring Terminals



Scan the QR code or visit pspproducts.com to learn more about this product's warranty.

8618 Phoenix Drive, Manassas, VA 20110
703.687.4057 | sales@pspproducts.com